



# SAMSUNG SMART SIGNAGE

## QBH-TR / QBN-W

Revitalize Productive Collaboration through Refined Interactive E-board Technology

Samsung's QBH-TR / QBN-W e-boards elevate information sharing and drive more productive conversation in classroom and meeting room settings through an interactive, all-in-one format. These versatile displays eliminate common meeting obstacles and allow groups to explore new ideas quickly and easily.

### HIGHLIGHTS

- Deliver a smooth, comfortable digital writing experience
- Enable up to four participants to write simultaneously with any tool
- Streamline efficient meeting facilitation via the embedded MagicWB S5 solution
- Alternate between content sources with an intuitive UX
- Improve real-time interaction and introduce new ideas through advanced connectivity
- Elevate content quality with crisp UHD resolution
- Enhance meeting room sophistication through a stylish, pristine design

## INDUSTRY TRENDS

Today's meeting rooms and classrooms require interactive capabilities that exceed those offered by projectors and whiteboards. Not surprisingly, more are turning to advanced displays that promote simultaneous collaboration. E-boards' popularity, and revenue, only is expected to grow further in the near future.

## WHY SAMSUNG QBH-TR / QBN-W SERIES?

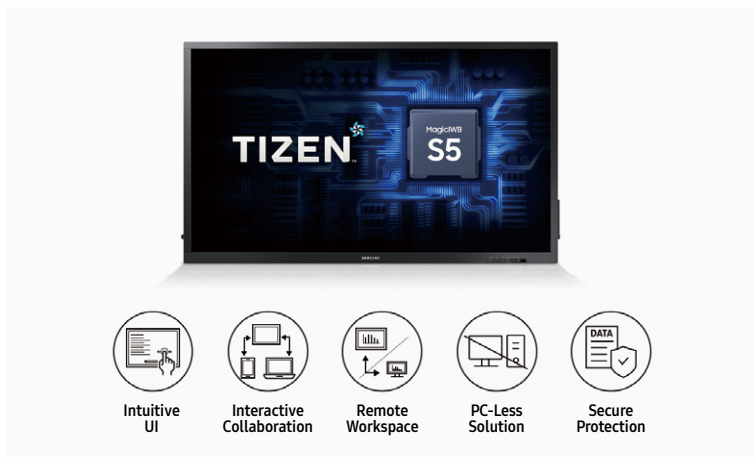
Samsung's QBH-TR / QBN-W e-boards offer a versatile, all-in-one arena for improved collaboration. Enhanced touch technology, the intuitive MagicIWB S5 solution and UHD picture quality come together to boost productivity and collaboration by facilitating engaging, efficient interaction.

## KEY FEATURES



### ENHANCE TOUCH, ENHANCE CAPACITY

Leverage heightened touch functionality for a smooth and versatile digital writing experience. Up to four users can write simultaneously using the provided pen or virtually any other tool.



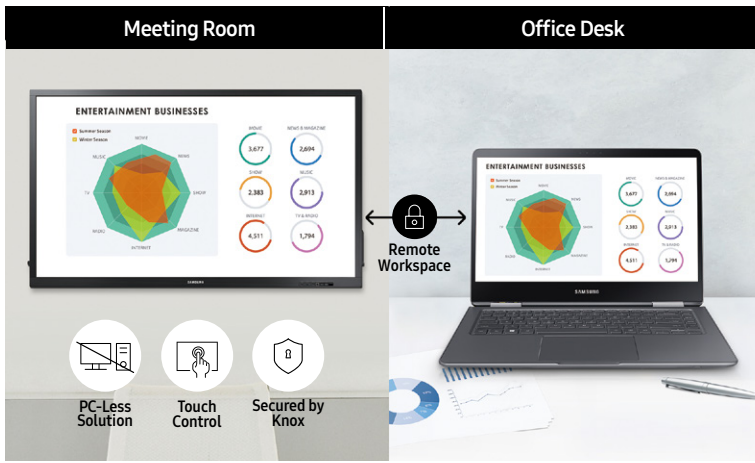
### ELEVATE COLLABORATION QUALITY, ALL-IN-ONE

The embedded MagicIWB S5 solution facilitates discussion management and organization with an intuitive interface for quick access to vital collaborative functionalities such as screen mirroring and real-time notation saving.



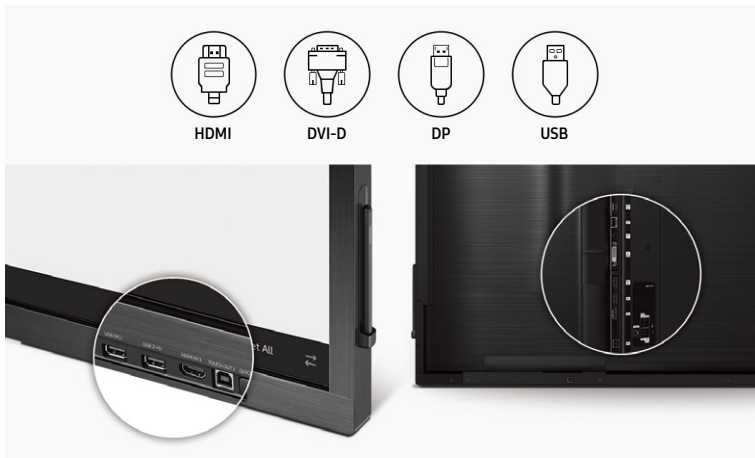
### SWITCH SOURCES SEAMLESSLY

Through the Working Screen function, users can quickly switch between multiple screens, such as the whiteboard, internet browser and connected input sources, with just a few touches.



## RETRIEVE AND CONTROL CONTENT REMOTELY

Pull and edit content on remote laptops directly through the central screen utilizing touch functionality. The powerful Knox system secures the Remote Workspace connection to protect against information leakage and meddling.



## CONNECT WITH CONVENIENCE

Each e-board offers a wide range of connections including HDMI, DVI-D, DP\* and USB ports, where users can load, share and revise content directly from their personal devices.

\* DP : QB65H-TR Only



## AMPLIFY VISUAL PRESENTATION

Bring collaborative ideas to life through advanced UHD picture quality. Through ultra-high resolution, ensure all notations and introduced content are clear and legible for every participant.



## MAINTAIN ORGANIZATION WITH STYLE

Drive more organized collaboration with a sleek, sophisticated design. The magnetic side pen holder and frontal connection ports keep needed functions within reach, without the mess.

# SPECIFICATIONS

| MODEL              |                                | QB65H-TR   | QB75N-W   |  |
|--------------------|--------------------------------|--|---|--|
| Panel              | Diagonal Size                  | 65   | 75  |  |
|                    | Type                           | 60Hz E-LED   | 120Hz Direct LED  |  |
|                    | Resolution                     | 3,840 x 2,160  | 3,840 x 2,160   |  |
|                    | Brightness(Typ.)               | 300nit (w/o Touch Glass)                                 | 300nit (w/o Touch Glass)  |  |
|                    | Contrast Ratio(Typ.)           | Mega   | Mega  |  |
|                    | Viewing Angle(H/V)             | 178:178  | 178:178   |  |
|                    | Response Time(G-to-G)          | 8ms  | 8ms   |  |
|                    | Operation Hour                 | 16/7   | 16/7  |  |
| Sound              | Speaker Type                   | Built in Speaker (10W x 2) (Down Firing w/Bass Reflex)   | Built in Speaker (10W x 2) (Down Firing w/Bass Reflex)  |  |
| Connectivity       | INPUT                          | RGB  | N/A   | N/A  |
|                    |                                | VIDEO  | HDMI Rear1, HDMI Rear2 (ver 2.0), HDMI Front3 (ver 1.4), DVI-D, DP  | HDMI Rear1, HDMI Rear2 (ver 2.0), HDMI Front3 (ver 1.4), DVI-D |
|                    |                                | AUDIO  | N/A   | N/A  |
|                    |                                | USB  | USB 1, 2 (Rear), USB 3 (Front), PC USB (Front)  | USB 1, 2 (Rear), USB 3 (Front), PC USB (Front)                 |
|                    | OUTPUT                         | RGB  | N/A   | N/A  |
|                    |                                | VIDEO  | N/A   | N/A  |
|                    |                                | AUDIO  | Audio   | Audio  |
|                    |                                | Touch Out  | Touch Out 1 (Rear), Touch Out 2 (Front)   | Touch Out 1 (Rear), Touch Out 2 (Front)                        |
|                    | INTERNAL                       | SENSOR   | N/A   | N/A  |
|                    | EXTERNAL                       | CONTROL  | RS232C(in/out) thru stereo jack, RJ45, Wi-Fi  | RS232C(in/out) thru stereo jack, RJ45, Wi-Fi                   |
|                    | SENSOR                         | IR Sensor(Display Control)                               | IR Sensor(Display Control)  |  |
| Touch              | Type                           | IR (Infra Red)   | IR (Infra Red)  |  |
|                    | # of Drawing                   | 4 drawing (SoC), 10 drawing (External Windows PC)        | 4 drawing (SoC), 10 drawing (External Windows PC)   |  |
|                    | Touch Pen Type                 | Passive Pen  | Passive Pen   |  |
|                    | Object Recognition Range       | 8mm  | 8mm   |  |
|                    | Touch Response Time            | 7ms (Single Touch)                                       | 7ms (Single Touch)  |  |
| Power              | Type                           | Internal   | Internal  |  |
|                    | Power Supply                   | AC100-240V 50/60Hz                                       | AC100-240V 50/60Hz  |  |
|                    | Power Consumption              | Rating[W/h]  | 150 (Max 165)   | 200 (Max 220)  |
|                    |                                | Typical[W/h]   | 115   | 157  |
|                    | Stand-by(Max)                  | 0.5  | 0.5   |  |
| Mechanical Spec    | Dimension (mm)                 | Set  | 1514.7 x 882.4 x 58.2   | 1741.5 x 1012.1 x 81.2   |
|                    |                                | Package  | 1619 x 231 x 1001   | 1905 x 1175 x 307  |
|                    | Weight (kg)                    | Set  | 39.2  | 57.4   |
|                    |                                | Package  | 48.0  | 69.5   |
|                    | Color                          | Black  | Black   |  |
|                    | VESA Mount                     | 400 x 400  | 400 x 400   |  |
|                    | Protection Glass               | Yes  | Yes   |  |
|                    | Stand Type                     | Wall Mount   | Wall Mount  |  |
|                    | Media Player Option Type       | N/A  | N/A   |  |
|                    | Rotation                       | N/A  | N/A   |  |
| Power Cable Length | 1.8m                           | 3m   |   |  |
| Operation          | Accessory                      | Pen Holder   | Pen Holder  |  |
|                    | Operating Temperature          | 0°C~ 40°C  | 0°C~ 40°C   |  |
|                    | Humidity                       | 10~80%   | 10~80%  |  |
| Feature            | Key                            | Slim & Light LFD with Built-in MagicInfo Player S5, SSSP |   |  |
|                    | Special                        | H/W  | Super Clear Coating, Temperature Sensor, Pivot Display, Clock Battery (168hrs Clock Keeping), Built in Speaker(10W x 2), WiFi Module Embedded                               |  |
|                    |                                | S/W  | MagicWB S5  |  |
|                    |                                | Platform   | Kant-M (Tizen 3.0)  |  |
|                    | Internal Player (Embedded H/W) | Processor  | Coretex A72 1.7GHz Quad-Core CPU  |  |
|                    |                                | On-Chip Cache Memory                                     | L1 Instruction Cache : 48KB / L1 Data Cache : 32KB / L2 Cache : 2MB   |  |
|                    |                                | Clock Speed  | 1.7GHz Quad-Core CPU  |  |
|                    |                                | Main Memory Interface                                    | 3GB 3ch 64bit LPDDR4 1.6GHz   |  |
|                    |                                | Graphics   | 2D & 3D Graphic Accelerator<br>Data Format : 32bpp<br>Output resolution : 3840x2160p  |  |
|                    |                                | Storage  | 8GB (3.88GB Occupied by O/S, 4.12GB Available)  |  |
|                    |                                | Multimedia   | Video Decoder<br>- MPEG1/2/4, H.263, H.264/AVC<br>- UHD H.264/AVC, VC-1, AVS/AVS+, MVC<br>- VP8, VP9, HEVC, JPEG<br>Audio DSP(Decoder)<br>- MPEG, AC3, AC4, DD, MP3 and etc |  |
|                    |                                | IO Ports   | USB 2.0   |  |
|                    |                                | Operating System   | Tizen 3.0 (VDLinux)   |  |
|                    |                                | Accessories  | Included  | Passive Pen, Power Cable                                       |
|                    | Optional                       |  | Stand   | Optional   |
| Mount              |                                |  | Optional  |  |
| Specialty          |                                |  | New MagicWB S5 UX   |  |

## About Samsung Electronics Co., Ltd.

Samsung inspires the world and shapes the future with transformative ideas and technologies. The company is redefining the worlds of TVs, smartphones, wearable devices, tablets, digital appliances, network systems, and memory, system LSI, foundry and LED solutions. For the latest news, please visit the Samsung Newsroom at <http://news.samsung.com>.

## SMART Signage

For more information about Samsung SMART Signage QBH-TR / QBN-W Series Displays, visit [www.samsung.com/business](http://www.samsung.com/business) or [www.samsung.com/displaysolutions](http://www.samsung.com/displaysolutions)

Copyright © 2019 Samsung Electronics Co. Ltd. All rights reserved. Samsung is a registered trademark of Samsung Electronics Co. Ltd. Specifications and designs are subject to change without notice. Non-metric weights and measurements are approximate. All data were deemed correct at time of creation. Samsung is not liable for errors or omissions. All brand, product, service names and logos are trademarks and/or registered trademarks of their respective owners and are hereby recognized and acknowledged.

Samsung Electronics Co., Ltd.  
416, Maetan 3-dong, Yeongtong-gu, Suwon-si, Gyeonggi-do 443-772, Korea

2019-08

**SAMSUNG**